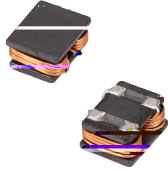


SCM Series

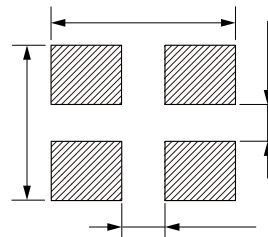
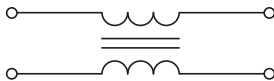
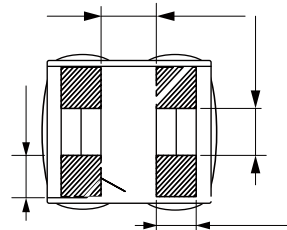
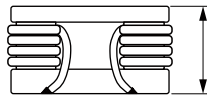
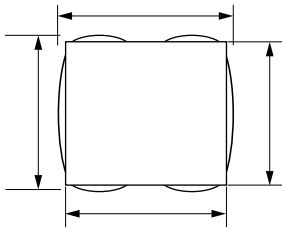


FEATURES

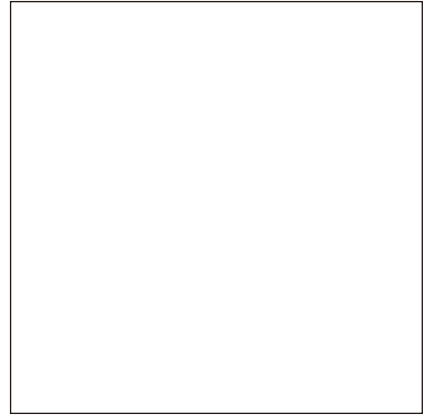
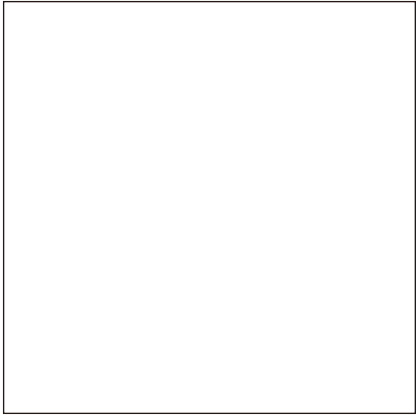
-
-
-
-

APPLICATIONS

-
-



Part No	Impedance @ 100 MHz Min. ()	Impedance @ 100 MHz Typ. ()	DC Resistance Max. (m)	Temperature Rise Current Max. (A)
SCM121006-701-90	700	900	12	9.0
SCM121006-801-80	800	1200	20	8.0
SCM121006-102-80	1000	1200	20	8.0
SCM121006-132-40	1200	1400	36	4.0



:

•

•

•

•

•

•

•

•