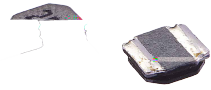
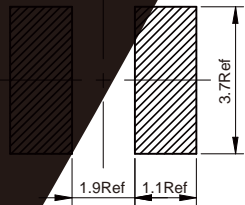
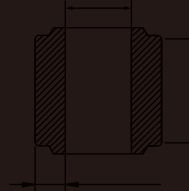
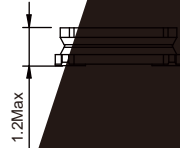
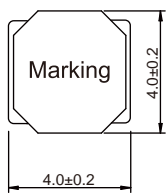


ed Tiny Power Inductor



Dimensions: [mm]



Electrical Properties:

					Saturation Current Max. (A)	DC Resistance Typ. (Ω)	Res M
	±30%	3.30	2.90	5.60	4.80	0.020	0
				4.50	3.90	0.031	0
	±30%	2.30	2.00	3.00	2.80	0.042	0
				2.35	2.20	0.051	0
	±20%	1.90	1.32	2.00	1.76	0.075	0
			1.32	1.65	1.35	0.075	0
	±20%	1.40	1.00	1.50	1.15	0.125	0
			1.00	1.60	1.00	0.150	0
	±20%	1.10	0.85	1.30	1.15	0.175	0
			0.80	0.95	0.85	0.180	0
	±20%	0.80	0.65	0.80	0.68	0.310	0
		0.80	0.55	0.75	0.60	0.430	0
	±20%	0.75	0.49	0.70	0.50	0.530	0
		0.52	0.42	0.60	0.50	0.780	1
	±20%	0.50	0.37	0.45	0.35	1.100	1

±5°C

Actual value of DC current when the temperature rise is T40C

Use initial inductance to drop approximately 30%

